

Crash Cymbal

*Dedicated to the Clifton Community Band of Clifton, NJ  
under the direction of Robert Morgan*

# The Peacemakers on the River Queen

Chris Opperman

Measures 1-8: 3/4 time signature, eighth notes.

Measure 9: 2/4 time signature, eighth notes.

Measures 10-16: 3/4 time signature, eighth notes.

Measure 17: 4/4 time signature, eighth notes. Section A starts here.

Measures 18-25: 3/4 time signature, eighth notes.

Measures 26-34: 3/4 time signature, eighth notes. Measure 27 has a forte (f) dynamic and a grace note.

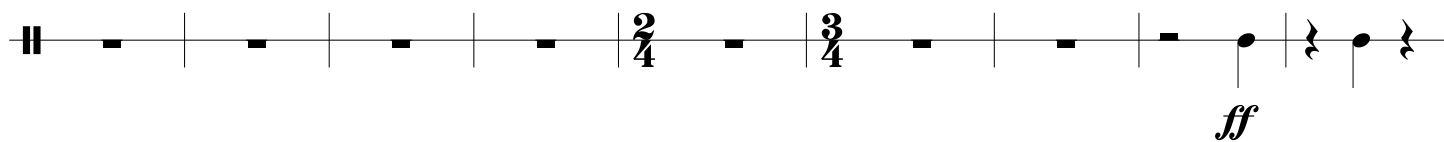
Measures 35-43: 3/4 time signature, eighth notes. Measure 36 has a forte (f) dynamic and a grace note. Section B starts here.

Measures 44-52: 3/4 time signature, eighth notes.

Measures 53-60: 3/4 time signature, eighth notes. Measure 54 has a forte (f) dynamic and a grace note. Measure 55 has a 2/4 time signature change.

Measures 61-68: 3/4 time signature, eighth notes. Measure 62 has a forte (f) dynamic and a grace note.

68



77

